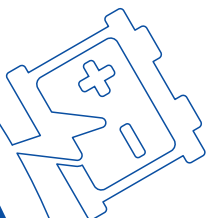
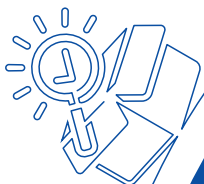
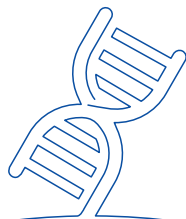
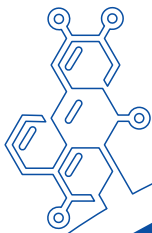


nite

National Institute of Technology and Evaluation



Institute Profile 2026



Safety and
your Future with NITE

Purpose of the Institute

The National Institute of Technology and Evaluation (NITE) was established in accordance with the Act on General Rules for Incorporated Administrative Agencies (Act No. 103 of 1999) and the Act on the National Institute of Technology and Evaluation, Independent Administrative Agency (Act No. 204 of 1999). NITE is an Agency Engaged in Administrative Execution and the competent ministry is the Ministry of Economy, Trade and Industry.

Act on the National Institute of Technology and Evaluation, Independent Administrative Agency

Article 3 By conducting technical evaluations of industrial products, etc., and collecting, evaluating, organizing and providing information on the quality of said industrial products, etc., the Institute seeks to establish a technical foundation for improving the quality of industrial products, etc. and ensuring the safety and smooth transactions thereof, thereby contributing to the development of the economy and industry and ensuring the stable and efficient supply of mineral resources and energy.

Minister in Charge

Minister of Economy, Trade and Industry

Basic Philosophy

NITE continuously contributes to the safety of society and supports the challenges of the future by proven technologies and reliable information.

Slogan

Safety and your Future with NITE

Code of Conduct

1 Act responsibly and with integrity

We will always keep in mind that we are public servants, and are operated by public funds, so we will carry out our duties in a fair, just and efficient manner from a neutral standpoint. We will comply with laws and regulations, behave ethically, and make appropriate judgments to act responsibly and with integrity.

2 Pursue higher-value results with enthusiasm and pride

We will always keep in mind that our duties are based on the trust and confidence of society, and do our work with enthusiasm and pride. We will pursue valuable results by enhancing our expertise with a broad perspective and high adaptability through self-improvement.

3 Utilize the latest science and technology and produce results that benefit society

Under our fundamental value of an organization that supports the government with technology, we will constantly improve our knowledge of science and technology. We will give back to society by producing results based on our knowledge, and then explaining gained results in a simple manner while considering the perspective of the other party.

CONTENTS

02	Purpose of the Institute, Basic Philosophy, etc.	10	Biotechnology Field
03	President's Message	12	Conformity Assessment Promotion Field
04	History	14	Electrical Safety Evaluation Field
05	NITE Business Outline: The Five Pillars That Support Safety and the Future	16	Responding to Changes in Society and Diversifying Needs Through Our Comprehensive Capabilities
06	Consumer Product Safety Field	18	NITE Database for Industry and Daily Life
08	Chemicals Management Field	19	Organization Chart and Office Locations



Learning from the Expo, Pioneering NITE's Future

The National Institute of Technology and Evaluation (NITE) works closely with relevant ministries, including the Ministry of Economy, Trade and Industry. Uniting five business fields and 11 offices nationwide, NITE implements initiatives that support the development of Japan's industries and the safety of society.

In 2025, NITE collaborated on an exhibition at the Japan Pavilion of the Osaka-Kansai Expo 2025 themed *Between Lives*, which provided visitors an immersive experience of the natural cycles driven by the workings of microorganisms. Seizing this opportunity, NITE also welcomed numerous domestic and international visitors to its Osaka office, located near the Expo site. They visited the world's largest testing and evaluation facilities for large-scale battery energy storage systems, whilst promoting NITE's overall initiatives. Furthermore, in response to a recent surge in lithium-ion battery accidents, NITE is intensifying our efforts to communicate with consumers, including collaborating with media outlets to disseminate product accident information via press releases and social media, encouraging viewers and readers to adopt safer behaviors.

Regarding each business field, in the Consumer Product Safety field, NITE will steadily implement the Four Product Safety Acts, and will further strengthen our efforts to disseminate information that leads to changes in consumer behavior through television news and other media. In the Chemicals Management field, NITE intends to promote harmonization between a society transitioning to a circular economy and existing systems of chemicals management such as the

Chemical Substances Control Law, while also working to strengthen relationships with business operators. In the Biotechnology Field, NITE will continue to develop the foundational infrastructure necessary for realizing a bioeconomy society, such as building a platform for microorganisms and related information to promote biomanufacturing that effectively utilizes CO₂. In the Conformity Assessment Promotion Field, NITE will actively pursue initiatives to promote conformity assessment in Japan, including strengthening support for our domestic certification bodies and conducting joint research with AIST on international standardization and societal implementation in the field of quantum technology. In the Electrical Safety Evaluation field, in light of increasing accidents involving storage battery systems, NITE will develop guidelines to enhance safety and reliability, strive to make them available for use by local governments and others, and address accident countermeasures for solar power generation facilities and similar equipment.

Leveraging its accumulated technical capabilities and expertise, NITE will solidify its foundation while further strengthening collaboration with businesses and related organizations to respond swiftly to the rapidly changing modern era.

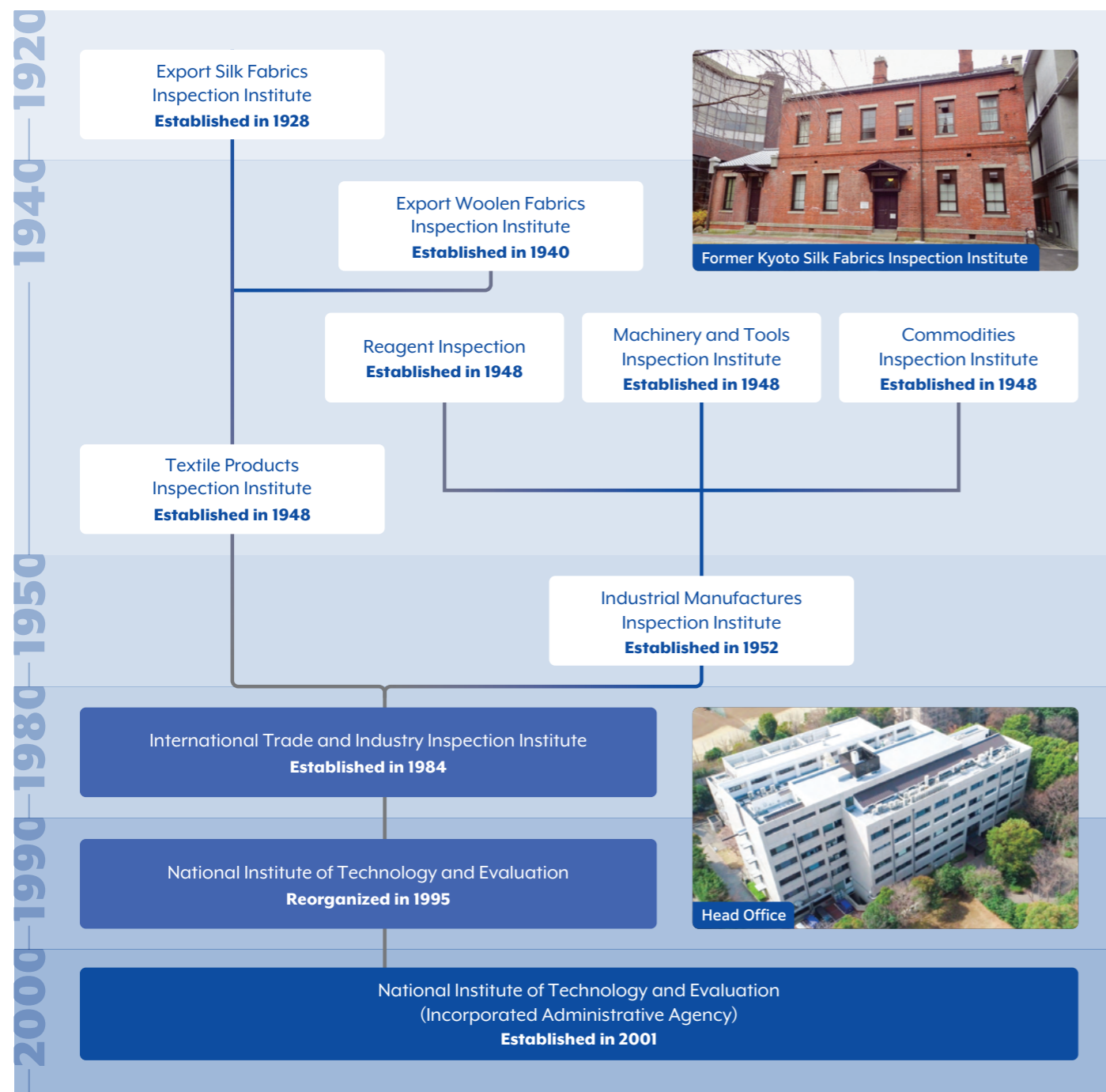
President

HASEGAWA Fumihiko

Prof. HASEGAWA Fumihiko, Ph.D.

Established in 1928, NITE originally served as the *Export Silk Fabrics Inspection Institute*, and conducting quality inspections of silk textiles. Inspection facilities for various industrial products were also established later. In the 1970s, we expanded into services related to product safety and work based on the Industrial Standardization Act. In the 1980s, we began handling safety assessments of chemical substances. In the 1990s, we entered the field of biotechnology and became an accreditation body, accrediting conformity assessment bodies. In October 1995, we were reorganized as the *National Institute of Technology and Evaluation*.

In April 2001, we became an incorporated administrative agency, the *National Institute of Technology and Evaluation* (NITE), under the jurisdiction of the Ministry of Economy, Trade and Industry (METI). We continue to leverage the technology and know-how we have accumulated since our establishment—such as for inspections and evaluations of industrial products—to smoothly respond to changes in policy needs and social needs and to promote the development of Japanese industries and a safer society.



NITE supports Japanese industry through our five work fields in technical evaluation and assessment based on various laws and policies, in close collaboration with METI and other relevant government agencies. NITE also promotes promoting innovation and a safer society on a global level by providing knowledge and data we have accumulated through our work to industry and the general public, strengthening collaborations with other countries, and participating in the creation of international rules.

Consumer Product Safety Field

We investigate and analyze information about product incidents and disseminate our findings to prevent recurrences and develop lower risk products.



Chemicals Management Field

To improve the efficiency of chemical safety assessments, we are promoting the use of methods that predict toxicity without actually conducting tests.



Biotechnology Field

To advance the biotechnology industry, we provide companies, universities, and research institutions with access to over 97,000 microbial strains and their associated genetic information.



Conformity Assessment Promotion Field

To contribute to the promotion of conformity assessment, we conduct activities to accredit conformity assessment bodies, and secure human resources, collaborate with other organizations and provide support for establishing assessment systems.

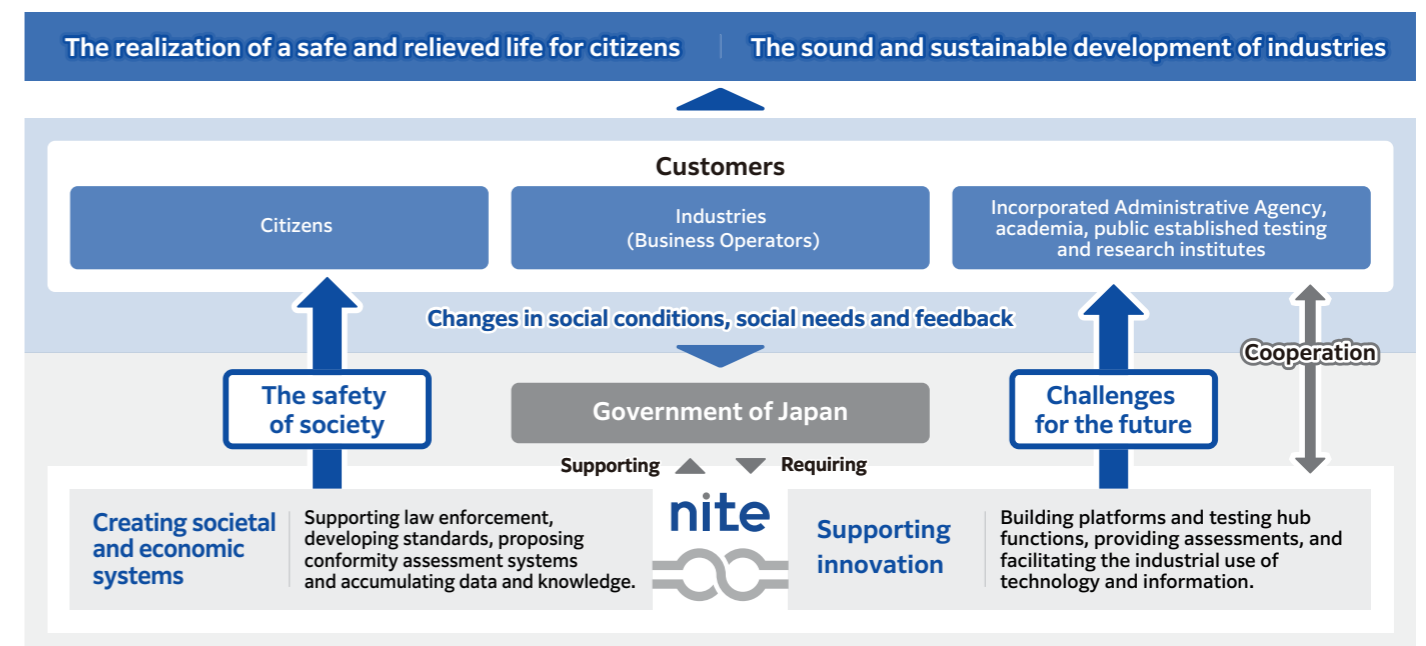


Electrical Safety Evaluation Field

We conduct activities to ensure the safe supply of electricity, such as testing and verifying the safety of large-scale battery energy storage systems using one of the world's largest testing facilities, as well as conducting on-site inspections based on the Electricity Business Act.



NITE Business Model





Contributing to Safe and Prosperous Lifestyles Through the Promotion of Low-Risk Consumer Products

There are many products around us that are essential for a convenient and comfortable life. However, using these products can lead to incidents such as fires, consumer injuries, and even death. NITE Product Safety Technology Center collects information on incidents involving consumer products, investigates and analyzes the causes and evaluates risks. NITE then provides this information to consumers and businesses. We also support to create standards to help businesses provide low-risk products. Through these activities, we help prevent incidents and their recurrence.

Contributing to the prevention of product incidents and their recurrence through high-level root cause analysis techniques

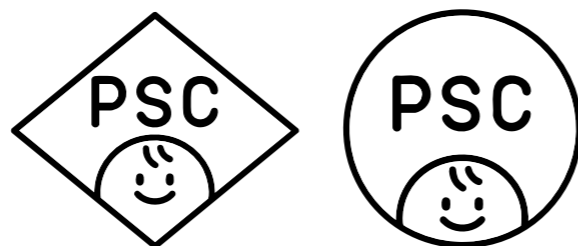
NITE collects information on incidents involving consumer products, such as electrical, gas and kerosene appliances, based on the Consumer Products Safety Act. In addition to reports from manufacturers and importers, we receive information on product incidents from fire departments, the police, consumer affairs centers and other sources. We receive reports on about 2,000 incidents each year, and collaborate with relevant organizations to investigate the root cause of these cases. Additionally, we work to prevent consumer product incidents by collecting information on repairs, complaints and incidents, etc., in cooperation with distributors.



▶ Analysis using an X-ray fluoroscope

Addressing responsibilities following the implementation of the revised four product safety acts

New regulations to ensure the safety of products sold directly to Japanese consumers via online transactions by overseas businesses, as well as children's products such as toys, took effect in December 2025. NITE will continue to conduct incident cause investigations and on-site inspections based on the revised Four Product Safety Acts (Electrical Appliances and Materials Safety Act, Consumer Product Safety Act, Act on the Securing of Safety and the Optimization of Transaction of Liquefied Petroleum Gas, Gas Business Act).



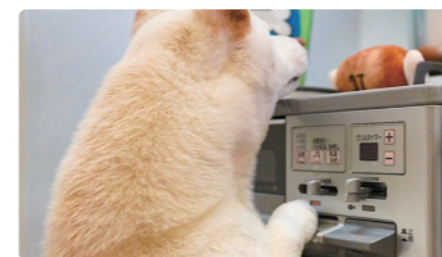
▶ Child PSC Mark attached to Specified Products for Children

Collecting, maintaining and organizing information on product-related incidents and providing this information to the public

The product incident information we collect is available to the public on the NITE website. Through seminars and lectures, we provide manufacturers with technical information and other data useful for making low-risk products. For consumers, we disseminate information to call attention to incidents and raise safety awareness through press conferences, leaflets, seminars at schools, and other methods, with the goal of preventing incidents caused by carelessness or the misuse of products.



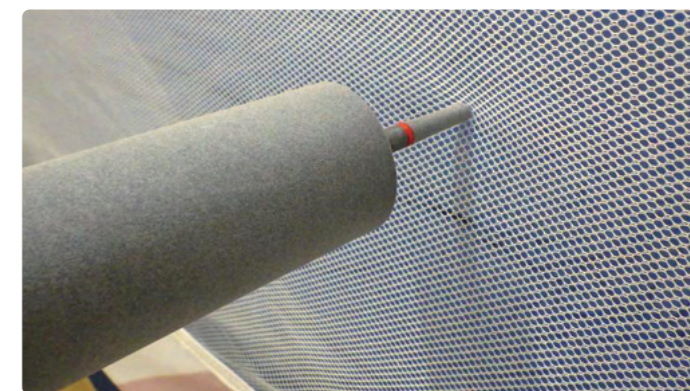
▶ A press conference on preventing incidents involving consumer products



▶ Warning videos about product-related incidents

Supporting the creation of product safety standards through our technical knowledge

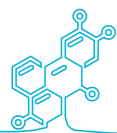
Leveraging its accumulated technical expertise, NITE develops technical requirements and standards, as well as product testing methods that contribute to incident prevention and actively proposes them to relevant parties. For example, regarding infant bed guards and other products under consideration for designation as Specified Products for Children, newly established in December 2025 under the revised Consumer Product Safety Act, we provide technical support for the purpose of developing technical requirements. This includes comparing and technically analyzing domestic and international standards, and drafting the initial version of the Ministerial Order on Technical Requirements for Specified Products Concerning the Ministry of Economy, Trade and Industry. To assist in preventing incidents caused by misuse or carelessness, the Ministry of Economy, Trade and Industry has launched the *Plus Anshin* program to recognize products designed to reduce incident risks. NITE participates in this program by leveraging its accumulated knowledge of product incidents to verify the validity of risk assessments, thereby contributing to the wider adoption of safer products.



▶ Checking to ensure an infant's fingers cannot get caught in the mesh of a crib guard



▶ Plus Anshin Program Logo Design Example



Promoting Risk Assessment and the Appropriate Management of Chemical Substances

All physical products around us are made of chemical substances. While chemical substances are an essential part of our lives and industry, they are also released into the environment during various processes such as manufacturing, distribution, use and disposal, and sometimes negatively affect our bodies.

NITE Chemicals Management Center assists in the appropriate management of chemical substances by providing technical support for safety assessments of chemical substances in accordance with the law, assessing the risks of chemical substances, and providing information on their safety.

Supporting safety assessments and risk assessments of chemical substances

The Chemical Substances Control Law (CSCL) aims to prevent environmental pollution caused by chemical substances that may affect humans and ecosystems.

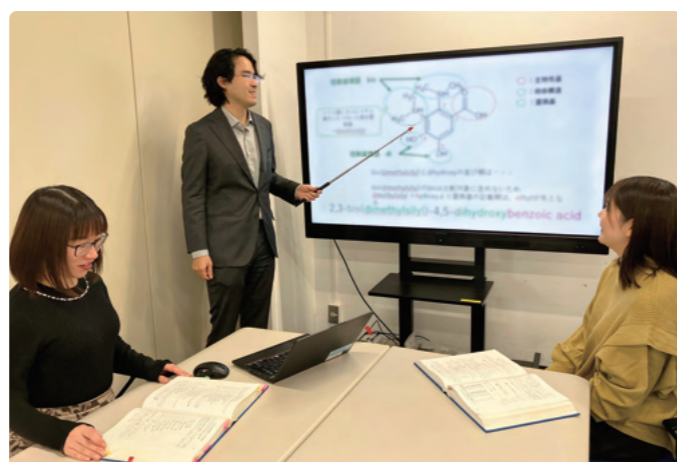
NITE provides technical support to promote the safe management of chemical substances and reduce the burden on businesses, such as by examining the data from the tests of chemical substances that businesses have submitted to government organizations in accordance with the CSCL, and accepting consultations regarding these submissions.

NITE conducts risk assessments to predict and evaluate the effects of chemical substances on human health and the ecosystem. Our risk assessment results are used, for example, to select chemical substances subject to regulation by the CSCL and to determine the level of regulation.

We also assign legal names to new chemical substances that have been submitted in accordance with the CSCL and applicable laws, as well as controlled chemicals with domestic manufacturing and use restrictions. By assigning names based on international nomenclature, we are contributing to the standardization of names across laws and regulations.



▶ Joint Council of the Ministry of Economy, Trade and Industry, the Ministry of Health, Labour and Welfare, and the Ministry of the Environment



▶ Scene from a discussion to decide upon the legal name for a new chemical substance

Promoting the voluntary management of chemical substances and international harmonization

The Pollutant Release and Transfer Register (PRTR) Law aims to prevent environmental pollution by promoting the voluntary management of chemical substances by business operators.

NITE is responsible for checking and compiling data under the PRTR system, in which businesses must report the volume of chemical substances they release into the environment based on the PRTR Law. We also provide technical support to businesses in submitting reports and have developed and continue to operate an electronic reporting system to improve their business operations.

We also contribute to international harmonization by carrying out duties such as attending international inspections under the direction of the minister of METI to ensure that the Chemical Weapons Convention (CWC) is being implemented properly in Japan.



▶ NITE also contributes to international networks for chemical substance management for example, the cooperative frameworks with East Asia

Developing chemical substance management information infrastructures

Chemical substances are the foundation of industry and technological innovation. Corporations that aim for sustainable development must understand a variety of information on national and international laws and regulations related to chemical substance management and respond appropriately in the activities they undertake.

Toward this end, NITE has established the Chemical Risk Information Platform (NITE-CHRIP) and the Japan Chemicals Collaborative Knowledge Database (J-CHECK). These databases provide information on domestic and international laws and regulations, as well as information on the toxicity of chemical substances, based on findings of the CSCL. In addition, we provide the latest information via email newsletters to provide businesses with information on relevant laws and regulations and the safety of chemical substances. (See p.18.)

We also provide centralized information that is useful in the proper handling of chemical substances, such as by publishing the results of classifications the Japanese government carried out based on the Globally Harmonized System of Classification and Labelling of Chemicals (GHS), and operate a helpful web tool, the GHS Mixture Classification and Label/SDS Creation System (NITE-Gmiccs).



Harnessing Microbial Resources for Industrial Growth and Social Well-being

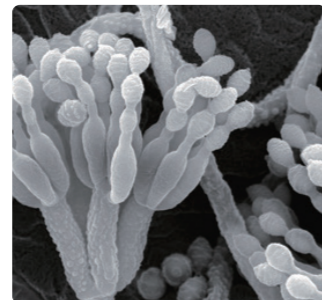
Microorganisms (bacteria, yeasts, fungi, etc.) are essential resources widely used in the production of antibiotics, fermented foods, and various chemicals. Biological Resource Center, NITE (NBRC) contributes to the development of a healthy and sustainable biotechnology industry, as well as the realization of a safe and secure society, by promoting the use of microorganisms and related data and by providing reliable safety information. In recent years, we have focused our efforts on revitalizing the biomanufacturing industry so as to contribute to achieving a carbon-neutral society.

Collection, preservation and provision of industrially useful microorganisms

NITE has collected and preserved approximately 98,000 strains of microorganisms from diverse environments. We provide these microorganisms to companies and research institutions, contributing to the development of a wide range of products used in daily life. Some microorganisms in our collection are specified by the Japanese Industrial Standards (JIS) and the Japanese Pharmacopoeia, and are used as test strains essential for the quality control of pharmaceuticals and hygiene products. Information on microorganisms and related services is available on the NITE website.



▶ Exploring Biological Diversity



▶ Electron Micrograph of Mold



▶ Sample for Biological Resource Distribution

Microbial Data Infrastructure for Industrial Use

In recent years, we are shifting from an era of *knowing, observing, and analyzing* organisms to the era of *designing and utilizing* them based on data. NITE has developed an infrastructure for the integrated use of microorganisms and related data, and provides the Data and Biological Resource Platform (DBRP), which enables users to centrally search for microorganisms and related information held by companies and research institutions in Japan. We have also developed M-RINDA (Microbial Risk Information Database), which offers information on biosafety levels, legal regulations and estimated hazardous potentials of microorganisms, including toxin production and drug resistance. Through these initiatives, we support the safe and appropriate industrial use of microorganisms.



▶ DBRP: A one-stop database for microorganisms



▶ M-RINDA: Easily find out information on the hazard potentials of microorganisms

Empowering Biomanufacturing with CO₂-Fixing Microorganisms

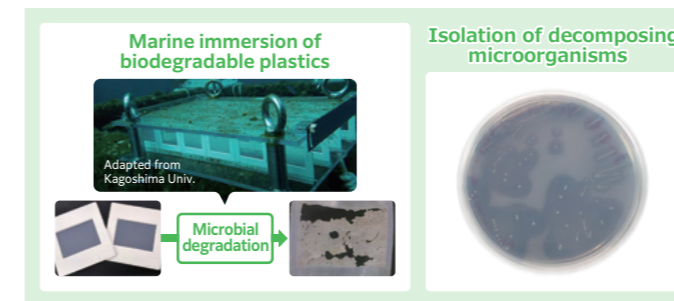
As one approach to achieving a carbon-neutral society, biomanufacturing is expected to see major productivity gains through advanced technologies such as genome editing. Supported by the New Energy and Industrial Technology Development Organization (NEDO), NITE is working for establishing a new technology platform for the utilization of CO₂-fixing microorganisms that expands access to CO₂-fixing microorganisms and related data and drives innovation in carbon recycling.



▶ Carbon recycling using biomanufacturing

Supporting the Use of Microorganisms in R&D and Industrialization

NITE generates and provides rapid microbial identification information that supports quality control in the medical, hygiene, and food industries. We also contribute to improving the reliability of microbiome analysis by providing measurement references (NBRC Microbial Cocktails) that contain multiple types of microorganisms. In addition, we are working to establish evaluation methods for biodegradable plastics and to develop new materials that help address marine plastic pollution. Furthermore, we support the international standardization of methods for identifying cashmere fibers using protein analysis technologies, and we are now working on methods to identify novel fibers produced by microbial cultivation.



▶ Collection and maintenance of bacteria used to decompose biodegradable plastic



▶ New fiber produced using microbial culture methods

Supporting GMO Industrial Use & Global Networking

NITE supports companies in the appropriate use of genetically modified organisms (GMOs) in compliance with the Convention on Biological Diversity (CBD) and the Cartagena Protocol on Biosafety. We process applications related to GMO use and conduct consultations and on-site inspections based on the Cartagena Act—Japan's domestic measure implementing the Cartagena Protocol. We also promote the proper use of Japanese genetic resources overseas by issuing Notifications of Acquisition of Genetic Resources in Japan in accordance with the ABS Guidelines of Japan. Furthermore, we established an Asian consortium called the Asian Consortium for the Conservation and Sustainable Use of Microbial Resources (ACM) to collaborate closely with biological resource centers across Asia.



▶ Group photo of the 21st Meeting of the ACM
Source: Biodiversity-Based Economy Development Office (BEDO)

Depository of Patent Microorganisms Necessary for Industrialization

NITE has two Patent Microorganisms Depositories : the NITE Patent Microorganisms Depository (NPMD) and International Patent Organism Depository (IPOD) . NPMD and IPOD are authorized institutions under the Budapest Treaty and the Japanese Patent Act to accept, preserve, and furnish microorganisms used in patent applications.



Promoting the utilization of conformity assessment to contribute to maintaining a safe society and solving social matters

The IAJapan ensures the credibility of testing or calibration laboratories, certification bodies through the accreditation activities, supporting the test results and/or the performance of products. In recent years, the Conformity Assessment Promotion Center has been focusing on developing and expanding accreditation programs/schemes that respond to diversifying policy and societal needs. The Conformity Assessment Promotion Center promotes introduce conformity assessment schemes/systems and contributes to maintaining a safe society and resolving social issues. By collecting and providing information for introducing conformity assessment, by developing human resources through training, and supporting the establishment of conformity assessment schemes to solve social issues.

IAJapan is a governmental body that accredits conformity assessment bodies (CABs) that are accepted both domestically and internationally.

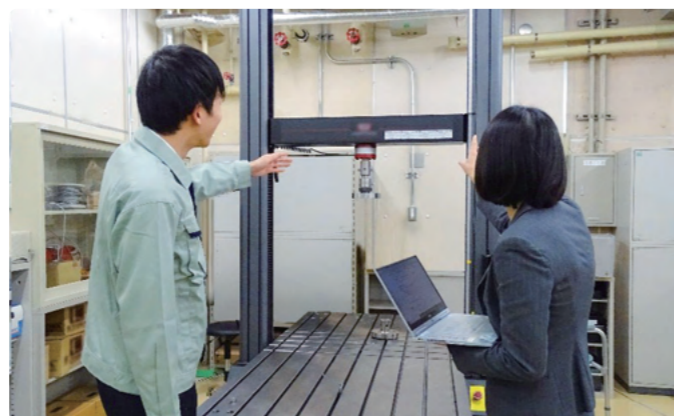
IAJapan conducts its accreditation activities in conformity with the applicable international standards* for accreditation bodies. The types of CABs that IAJapan accredits and the applicable international standards for those CABs are as follows.

* ISO/IEC 17011 Conformity assessment — Requirements for accreditation bodies accrediting conformity assessment bodies

Conformity Assessment Bodies	Applicable International Standards
Testing laboratory	ISO/IEC 17025 General requirements for the competence of testing and calibration laboratories
Calibration laboratory	
Reference material producer	ISO/IEC 17034 General requirements for the competence of reference material producers
Product / Process certification body	ISO/IEC 17065 Conformity assessment-requirements for bodies certifying products, processes and services.

Ensuring the Reliability of Calibration Activities Supporting Industrial Activities— Registration and Accreditation of Calibration Laboratories

For the sustainability and growth of industry activities, it is necessary to ensure the reliability of calibration activities. IAJapan accredits calibration laboratories that calibrate measuring instruments to ensure their reliability. IAJapan operates two programs: JCSS, an accreditation program based on the Measurement Act; and ASNITE, IAJapan's own program, to cover the measuring instruments used by labs and industry.



▶ On-site assessment (image)

Ensuring the Quality of Products and the Safety of Our Lives —Registration and Accreditation of Testing Laboratories

Various testing services are provided by testing laboratories to ensure the safety of lives and to confirm the quality of products.

IAJapan accredits these laboratories to ensure the reliability of their test results.

IAJapan operates the following accreditation systems/programs for testing laboratories:

- 1) the Japan National Laboratory Accreditation system (JNLA), based on the Industrial Standards Act
- 2) the Specified Measurement Laboratory Accreditation Program (MLAP), based on the Measurement Act
- 3) the ASNITE Testing Program (general, environmental, and IT fields)



▶ Testing services by JNLA test laboratory (image)

Accreditation of Reference Material Producers (RMPs)

To assess and accredit the competence of business operators producing and supplying reference materials (RMs) is necessary to ensure the reliability of the RMs they provide and to be used as standards for chemical analysis and other purposes.

IAJapan accredits RMPs that provide standard solutions, standard gases, and environmental reference materials (such as seawater).



▶ Measurement activities by RMPs (image)

Accreditation of Product/Process Certification Bodies

To solve global issues such as the Sustainable Development Goals (SDGs) and ensure product safety and competitiveness, it is important to demonstrate that the objects and processes meet requirements and expectations. Promoting global acceptance of product/process certification results is attracting international attention as a means of handling these issues. IAJapan provides accreditation services for certification bodies in the areas including sustainability, product safety and railroads.



▶ Products certified by the ASNITE program certification bodies (image)

Collection and provision of information, human resource development, and provision of support for establishment of conformity assessment scheme

Mechanisms utilizing conformity assessment may realize a society in which trustworthy products can be selected, contribute to market development and solve various social matters. Therefore knowledge for developing such mechanisms is required. NITE collects and provides information on conformity assessments gathered through its daily activities in the form of conformity assessment guidebooks and activity deliverables.

We are advancing collaboration with domestic and international organizations, such as Japan Accreditation Council (JAC), National Institute of Advanced Industrial Science and Technology (AIST), Japanese Standards Association (JSA), International Organization for Standardization (ISO), and International Electrotechnical Commission (IEC).

NITE also conducts training to develop personnel responsible for conformity assessments, provides consultation on the design of assessment schemes and/or systems and offers technical advice. Through these efforts, NITE aims to promote the use of conformity assessments in our country.



Supporting Green Transformation (GX^{*1}) with Safety

NITE Electrical Safety Evaluation Center conducts safety testing and evaluations of advanced Battery Energy Storage Systems (BESS). With the goal of strengthening international competitiveness, we actively promote the evaluation of the performance and safety of next-generation batteries, such as the All-Solid-State-Battery.

We also provide technical support for electrical safety administration, such as on-site accident investigations and the promotion of smart safety technologies utilizing AI and IoT technologies, to ensure a stable domestic power supply.

These activities contribute to the further spread of renewable energy and ensure public safety and support the expansion of BESS and the development of new businesses such as reuse, to realize GX which will transform industrial and social structures.

*1 GX: Initiatives to shift industrial and social structures from fossil fuel-based to clean energy-based systems.

Strengthen global competitiveness using one of the world's largest testing and evaluation facilities for large-scale battery energy storage systems

NITE operates the National Laboratory for Advanced Energy Storage Technologies (NLAB), one of the world's largest testing and evaluation facilities for large-scale battery energy storage systems, in Osaka and conducts testing and evaluation to ensure the performance, reliability and safety of new products and systems. The NLAB provides testing services that meet a wide range of needs that other testing organizations cannot provide. The *NLAB Large Chamber*, the world's first and still one of the largest thermostatic test spaces, allows the implementation of customized tests that involve ignition, combustion and explosions in a safe manner. Various tests that reproduce the vibrations that occur during earthquakes and transportation as well as charge/discharge tests in extreme temperatures can be conducted at *NLAB functional testing facilities*. In addition, the NLAB contributes to the development and expansion of a market for large-scale battery energy storage systems through creating new testing and evaluation methods for performance, reliability and safety. We are working on the international standard while collaborating with businesses and research institutions.



▶ NLAB in Osaka



▶ Inside the NLAB Large Chamber

In addition, NITE started operating the *NLAB MIDDLE Chamber*^{*2} in October 2024 to meet the testing needs for next-generation batteries including solid-state batteries. It is also possible to conduct safety tests on sulfide-based solid-state batteries.

*2 MIDDLE Chamber: Multiple Innovation-Directive Development and Leading-Edge Evaluation Chamber



▶ NLAB MIDDLE Chamber

Technical support for electrical safety administration

NITE provides technical support for electrical safety administration with the aim of reducing accidents in electric facilities. Using the knowledge and experience we have cultivated, we work on a variety of tasks that help maintain and improve the quality of electrical safety while collaborating with the Ministry of Economy, Trade and Industry (METI) and other related organizations.

As part of this effort, we analyze and publish accident information on electric facilities reported to METI by businesses. For example, we publish *Electrical Safety Statistics*, which summarize the trends in accidents by fiscal year. In addition, we provide the *Detailed Accident Report Publication System* on our website, which makes it possible to easily search our database of accident information collected from around the country. This can be used by businesses to consider recurrence prevention measures and for in-house training.

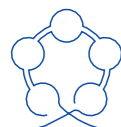
In recent years, a lot of attention has been paid to *smart safety*, which utilizes new technologies such as AI, IoT, robots and drones in addition to data. NITE operates the *Smart Safety Promotion Committee* to confirm the technical adequacy of new safety technologies. By confirming the adequacy and effectiveness of technologies through this committee, we can support the on-site implementation of technologies, leading to better operational efficiency and lower cost and labor needs. Furthermore, we promote the introduction of smart safety technologies and improve safety standards by cataloguing and publishing the technologies we reviewed.



▶ Electric facility (image)



▶ Smart Safety Promotion Committee



Responding to Changes in Society and Diversifying Needs Through Our Comprehensive Capabilities



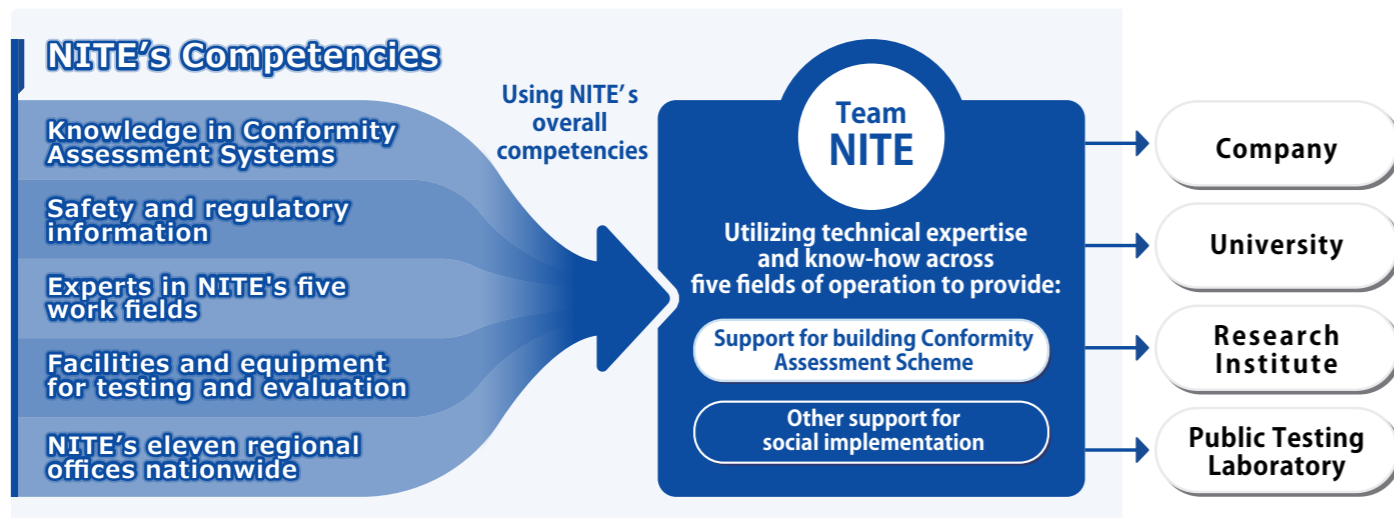
Team NITE Initiatives to Support Innovation

Team NITE is the Initiatives to support innovation by enterprises and industries facing challenges in social implementation through utilizing the collective strength of NITE.

Based on cross-organization collaboration in five technical fields, NITE is performing the following activities:

- *Support for establishment of evaluation system* ; an activity to create objective evaluation systems that work as a yardstick to clearly communicate the value of products, technologies and services and to enhance their reliability.
- *Other social implementation support* ; an activity to solve problems in R&D and social implementation for the creation of products and services through technical consultation, the utilization of facilities, collaborative research, and the dispatch of lecturers.

Support Provided by Team NITE



Initiatives to Improve Standardization and Conformity Assessment Literacy

Development of External Human Resources

NITE develops human resources by training for social implementation and the use of standards with a focus on the development of conformity assessment schemes, as well as the development and maintenance of a network of domestic human resources.



▶ A scene from a follow-up lecture for external human resources literacy improvement

Development of Internal Human Resources

Standards and conformity assessment literacy is essential for all NITE staff because technology evaluation is core value for NITE. We start training programs for all NITE staff to obtain basic conformity assessment knowledge.

Promotion of Digital Transformation (DX)

- We are promoting DX based on the *NITE Digital Vision*, which sets out the goals for DX at NITE, and the *Action Plan* formulated under this vision to improve productivity and create and deliver new value.
- We are strategically supporting the development of digital human resources by formulating the *Direction for Securing and Developing Digital Human Resources* based on NITE's characteristics. By establishing a strategic training framework, we are enhancing staff training and supporting self-directed learning.
- We are promoting the trial introduction and use of generative AI with agent functions to structure NITE's unique technologies and expertise into knowledge and to improve operational efficiency through their effective use.



Systematic Human Resource Development and Workplace Environment Improvement to Enhance Expertise

- We have a well-developed training system to help our staff add to their expertise. We also have an overseas dispatch program to develop global human resources, by which we send our staff to the Organization for Economic Co-operation and Development (OECD) in France.
- We are creating a workplace environment in which everyone, regardless of gender, generation or the like, can play an active role. Our efforts to promote the active participation of women have been recognized, and we have received the *Eru-boshi (L-Star) Certification* from the Ministry of Health, Labour and Welfare. We have also introduced an employee promotion system based on abilities and achievements, allowing employees to be promoted regardless of their age or years of experience.



▶ Many staff members play active roles

Providing Various Information to the Public—Our Public Relations Efforts

To contribute to the safety of society, we actively disseminate information, including product accident warnings, through media such as press releases, X and YouTube.

- We host events to promote communication with local residents and provide hands-on exhibits for children to learn about NITE's initiatives.
- We produce NITE introduction videos to enhance public understanding of NITE's role and operations.

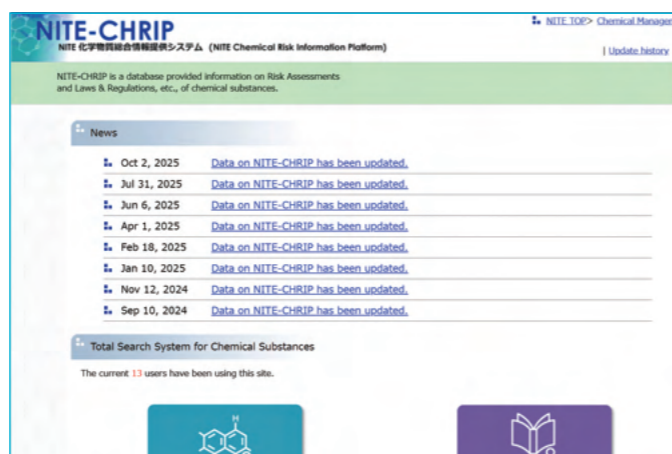


▶ A scene from an event for the local community

NITE compiles the information it collects and investigates into databases that are available to the public. You can easily search for the information you need.

NITE Chemical Risk Information Platform (NITE-CHRIP)

This is Japan's largest information database on the laws and regulations necessary to manage chemical substances and track their hazardous properties. The information is independently collected and organized by NITE. You can search for information on chemical substance regulations and toxicity assessments from Japan and around the world using CAS numbers, names, lists of substances subject to legal regulations, etc. You can also use this as a reference for complying with chemical substance legislation and promoting the voluntary management of chemical substances.

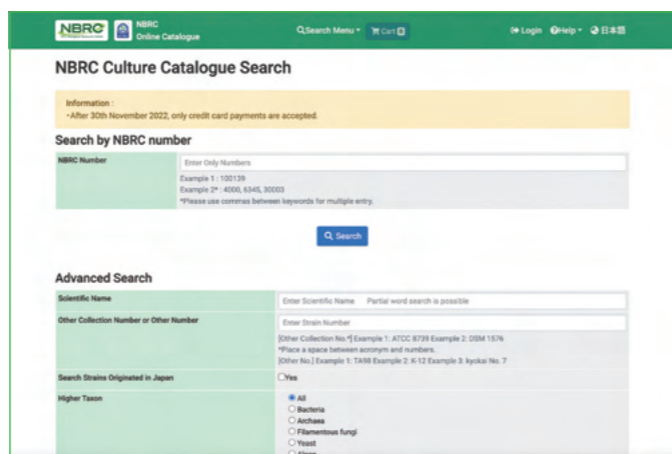


https://www.chem-info.nite.go.jp/en/chem/chrip/chrip_search/systemTop



NBRC Online Catalog

Among the microorganisms collected and preserved by NITE, detailed information on approximately 24,000 strains (NBRC strains) deposited by researchers in Japan and abroad is available, including scientific names, NBRC numbers, countries of origin, culture conditions, isolation sources, applications, genetic information and references. Please refer to the catalog when considering the use of NBRC strains. You can also request NBRC strains directly from the online catalog.

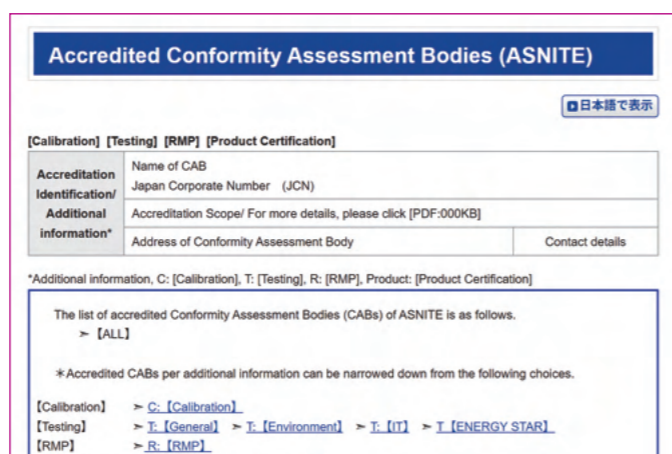


<https://www.nite.go.jp/nbrc/catalogue/?lang=en>

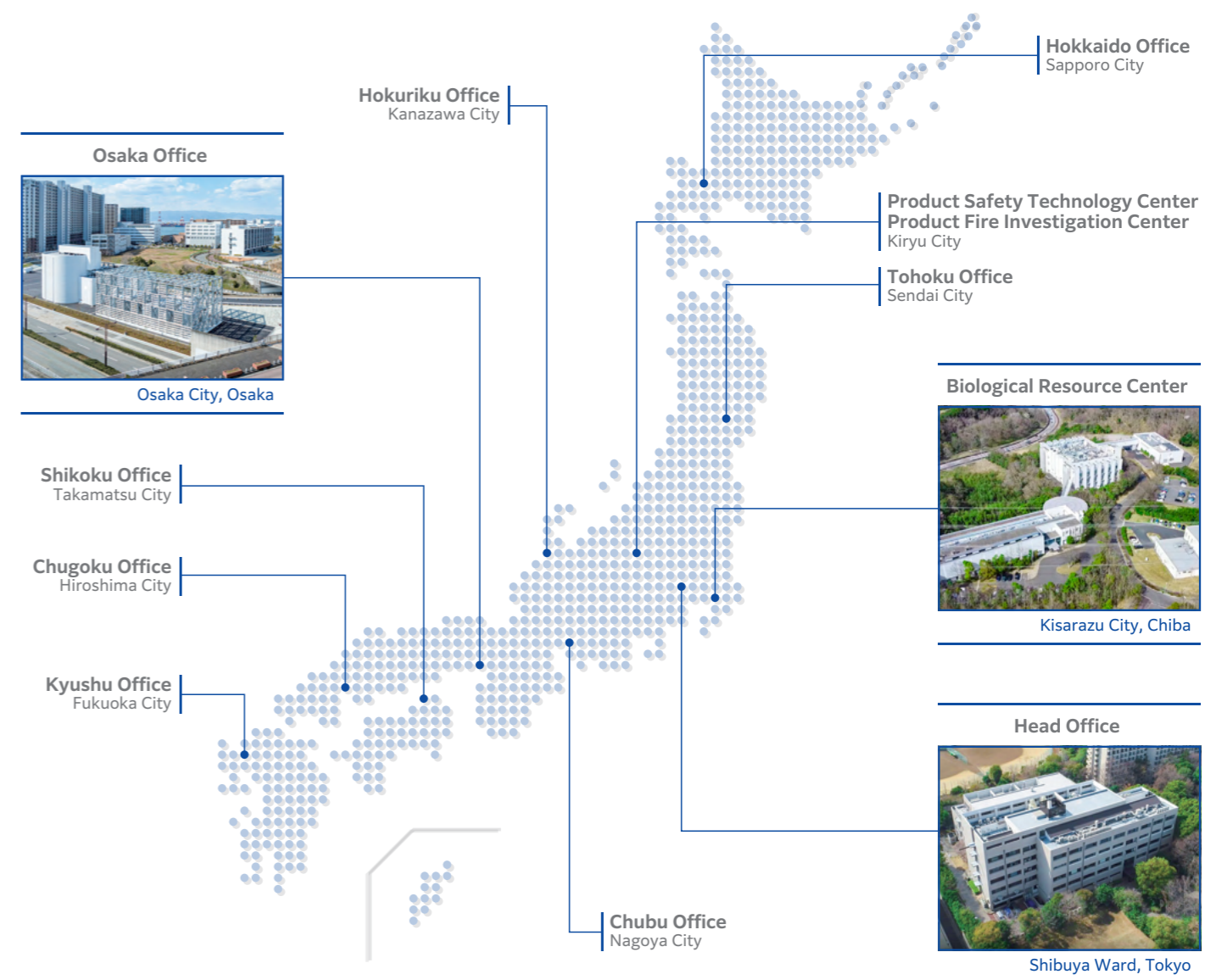
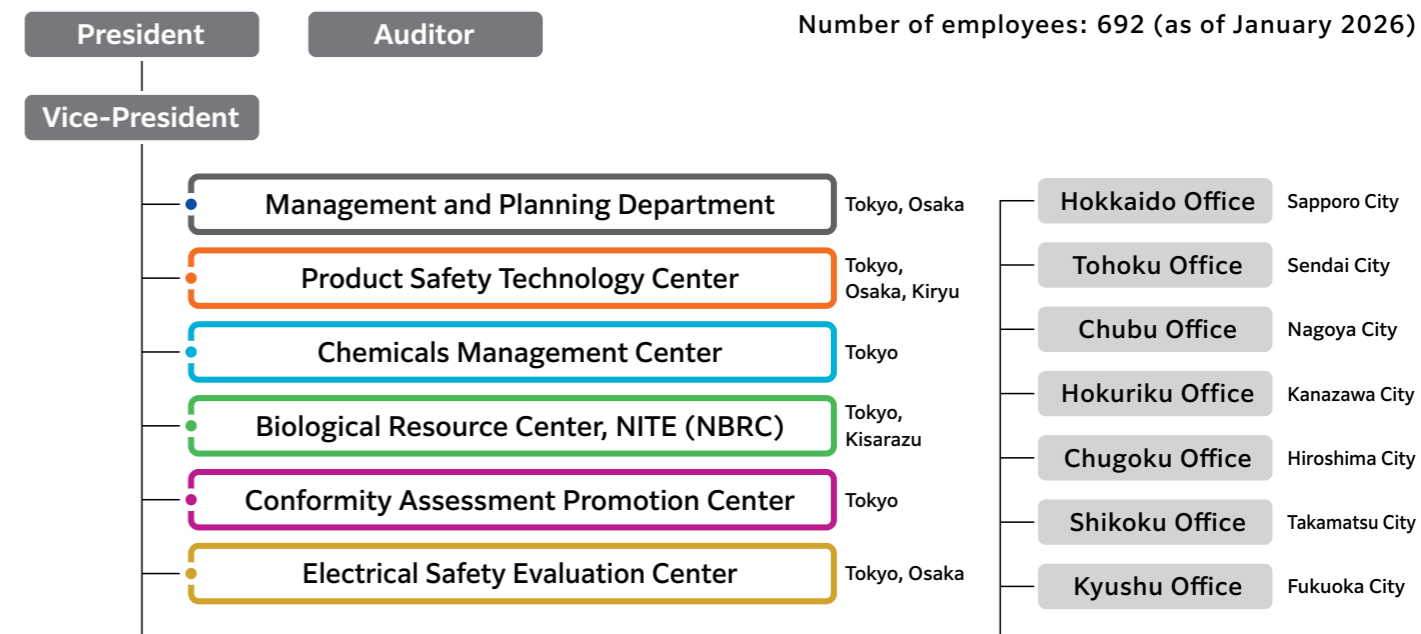


Conformity Assessment Bodies (CABs) accredited by IAJapan

Accreditation information of CABs accredited by IAJapan can be found at the following URL. The consists of name of CABs, laboratories (testing, calibration), reference material producers, and certification bodies for products and processes. You can use this to find accredited bodies when requesting proofreading, testing, or other services based on NITE's accreditation program.



<https://www.nite.go.jp/en/iajapan/aboutus/ippan/lab-e.html>





National Institute of Technology and Evaluation

2-49-10 Nishihara, Shibuya-ku, Tokyo 151-0066, Japan

Tel. +81-3-3481-1921 <https://www.nite.go.jp/en/index.html>